



Ideh varzan farda (IVF Co)

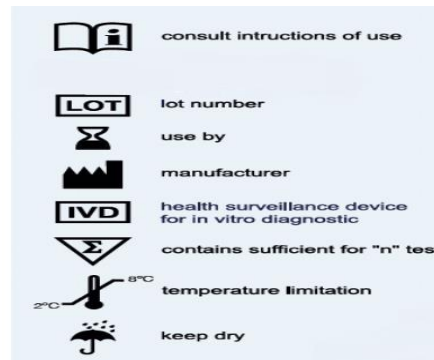
Establishment in 2014. IVF Co is one of the leading companies, in research, development and manufacture of sperm analysis reagents and disposable Products for human reproduction .We are trying to produce with same quality as famous brands, but in lower prices.

Leukocyte Detection Kit (200 TESTS)

CE



ISO13485:2016



No. 117, Bldg. 2, Tehran Technology Park, 16th, North Amirabad,

1439817435, Tehran, Iran

WWW.IVFCO.IR

TEL:86093832-86094419

FAX: 86093832

WHATSAPP: 0920 544 5464

Leukocyte Detection Kit

Elevated concentrations of leukocytes in semen have been associated with genital tract infection has negative effect on semen quality and IVF and embryo transfer. According to the World Health Organization (WHO), the threshold value for a normal seminal white blood cell (WBC) count is $1 \times 10^6/\text{ml}$. Peroxidase enzyme in leukocytes raise the reactive oxygen species (ROS) and defend against pathogenic agents. So polymorphonuclear can be counted by peroxidase staining. To count leukocytes in semen this assay is simple and accurate

Precautions

- The test should be discarded in a proper biohazard container after testing.
- Do not eat, drink or smoke in the area where specimens and kit reagents are handled.
- Do not use beyond the expiration date, which appears on the package label.
- The use of gloves and face mask is recommended
- Do the test under the chemical hood

Store condition

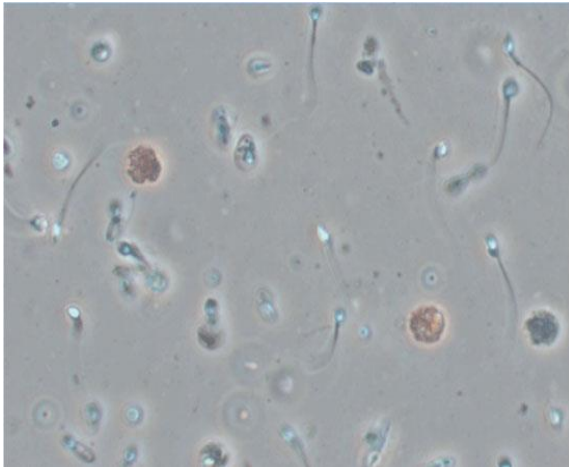
After receiving the kit store at $2-8^\circ$ for 6 months.

Sperm sample

Semen samples should be collected in a sterile container. The leukocyte detection should be performed immediately.

Normal range

According to WHO 2010
Granulocytes $\geq 1 \times 10^6$ is abnormal



4. Use the following formula to calculate the total leukocyte count:

$$\frac{\text{granulocytes}}{\text{ml}} = \text{sperm count} * \frac{\text{brown cells}}{\text{sperm cells}}$$

Example: semen specimen place on a glass slide with a coverslip and viewed at 40x:

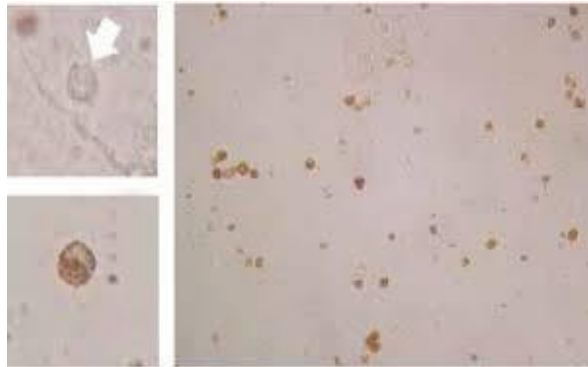
Sperm count: 40×10^6

Number of brown cell:5

Number of sperm: 72

Applying the formula:

$$WBC = 40 * 10^6 * \frac{5}{72} = 3 \times 10^6$$



Description of kit reagents

Bottle A: A solution (25 ml)
Bottle B: B Solution hydrogen peroxide(1 ml)

Instruction for use

1. To make daily working solution: mix 2 ml of A solution with 5 μ l of B solution .incubated for 3 minutes in darkness.

- This working solution is enough for 15 samples.

2. 100 μ l of working solution add to 100 μ l of semen and incubated for 3-4 minutes in room temperature.

3. 10 μ l of test sample load on the hemocytometer slide, put the cover glass and count the seminal WBC (brown or yellow cells) by optical microscopic.