



Ideh varzan farda (IVF Co)

Establishment in 2014. IVF Co is one of the leading companies, in research, development and manufacture of sperm analysis reagents and disposable Products for human reproduction .We are trying to produce with same quality as famous brands, but in lower prices.

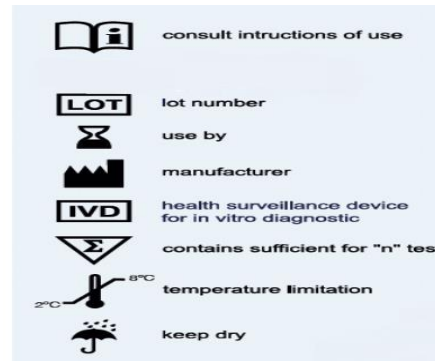
Sperm Chromatin Maturation Assay Kit

SCMA KIT (100 TESTS)

CE



ISO13485:2016



No. 117, Bldg. 2, Tehran Technology Park, 16th, North Amirabad,

1439817435, Tehran, Iran

WWW.IVFCO.IR

TEL:86093832-86094419

FAX: 86093832

WHATSAPP: 0920 544 5464

Sperm Chromatin Maturation Assay Kit

The maturity of sperm chromatin is essential for fertilizing capacity of spermatozoa and embryonic development. Aniline blue (AB) test evaluates the degree of sperm chromatin compaction or maturation, and it is able to detect sperm chromatin defects related to their nucleoprotein content. This method allows discriminating between the presence of lysine-rich histones and arginine- and cysteine-rich protamine in sperm nuclei. Consequently, histone-rich nuclei of immature sperm will take up the blue stain whereas mature protamine-rich nuclei remain unstained.

Precautions

- The test should be discarded in a proper biohazard container after testing.
- Do not eat, drink or smoke in the area where specimens and kit reagents are handled.
- Do not use beyond the expiration date, which appears on the package label.
- The use of gloves and face mask is recommended
- Do the test under the chemical hood

Store condition

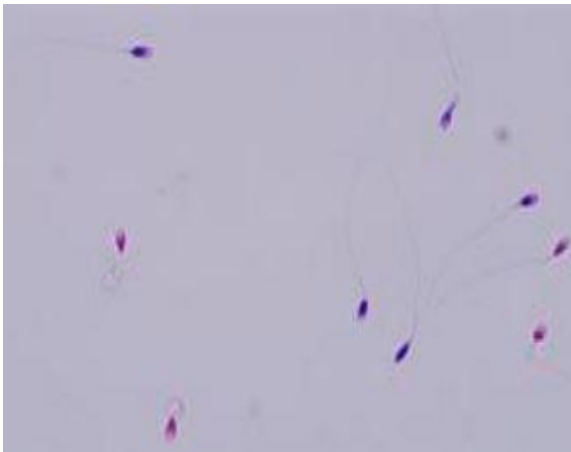
After receiving the kit store at 2-8 ° for 12 months.

Sperm sample

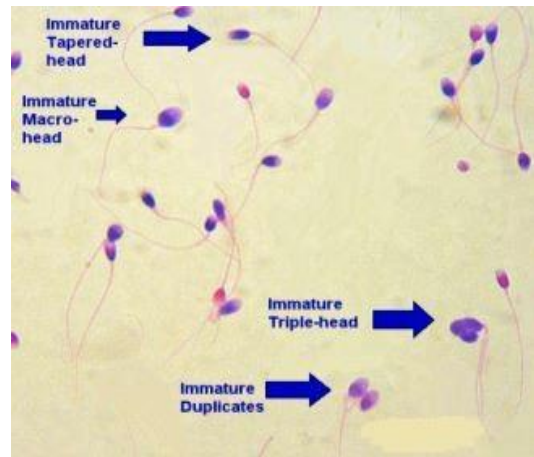
Semen samples should be collected in a sterile container. The staining sperms should be performed.

Normal range

- Blue cells (immature cell) $\leq 30\%$ Normal.
- Blue cells (immature cells) $\geq 30\%$ Abnormal.



6. For each stained smear, 200 spermatozoa were evaluated with light microscope in oil immersion magnification (100 x objectives). Spermatozoa with red nuclei are considered normal (mature chromatin) while those blue stained were considered abnormal (immature chromatin).



Description of kit reagents

Bottle A: Fixative solution (100 ml)
Bottle B: Staining Solution I (100 ml)
Bottle C: Staining Solution II (100 ml)
Number of tests possible: 100 tests

Instruction for use

1. After liquefaction, 1 mL of neat semen was washed twice in PBS 1x. We spread 10 μL of sperm pellet on glass slides, and sperm smears are allowed to dry in air.
2. Smear was fixed with a solution A for 30 minutes.
* It is very important to remove the reagent without shaking.
3. Slide was stained with solution B and incubated for 7 minutes.
4. Remove the excess of stain with water slowly. Then Slide stained with solution C for 3 minutes.
5. At the end slide washed with distilled water indirectly and allow to dry.